

Bedfordshire Road Casualty Figures

Government Road Casualty Target 2000-2010

Year	Fatal	Serious	KSI Total	Child KSI Total	KSI % Change	Slight	Total	Total % Change
1994	38	383	421	61	From Previous Year	2,385	2,806	From Previous Year
1995	49	357	406	48	-3.56	2,385	2,791	-0.53
1996	41	365	406	64	0.00	2,663	3,069	9.96
1997	37	320	357	37	-12.07	2,670	3,027	-1.37
1998	30	371	401	56	12.32	2,701	3,102	2.48
1994-1998 Average	39.00	359.20	398.20	53.20		2560.80	2959.00	
Target for 2010			238.92	26.60		2304.72		

Bedfordshire Actual Road Casualty Figures

1999	49	346	395	53	-1.50	2,441	2,836	-8.58
2000	36	320	356	48	-9.87	2,548	2,904	2.40
2001	39	292	331	25	-7.02	2,515	2,846	-2.00
2002	52	237	289	25	-12.69	2,252	2,541	-10.72
2003	32	251	283	27	-2.08	2,123	2,406	-5.31
2004	23	228	251	35	-11.31	2,090	2,341	-2.70
2005	29	265	294	23	17.13	2,031	2,325	-0.68
2006	32	240	272	31	-7.48	2,043	2,315	-0.43
2007	27	246	273	21	0.37	2,121	2,394	3.41
2008	28	242	270	27	-1.10	2,048	2,318	-3.17
2009	25	222	247	19	-9.52	1,702	1,949	-18.59
2010	2	38	40	7	-85.19	15	55	-97.63

% Reduction to 94/98 Figures **-37.97** **-64.29** **-20.02** **-21.66**

% Target 94/98 Figures **40%** **50%** **10%**

Main Source DfT July-09

Claire's figures sourced from Key Accident

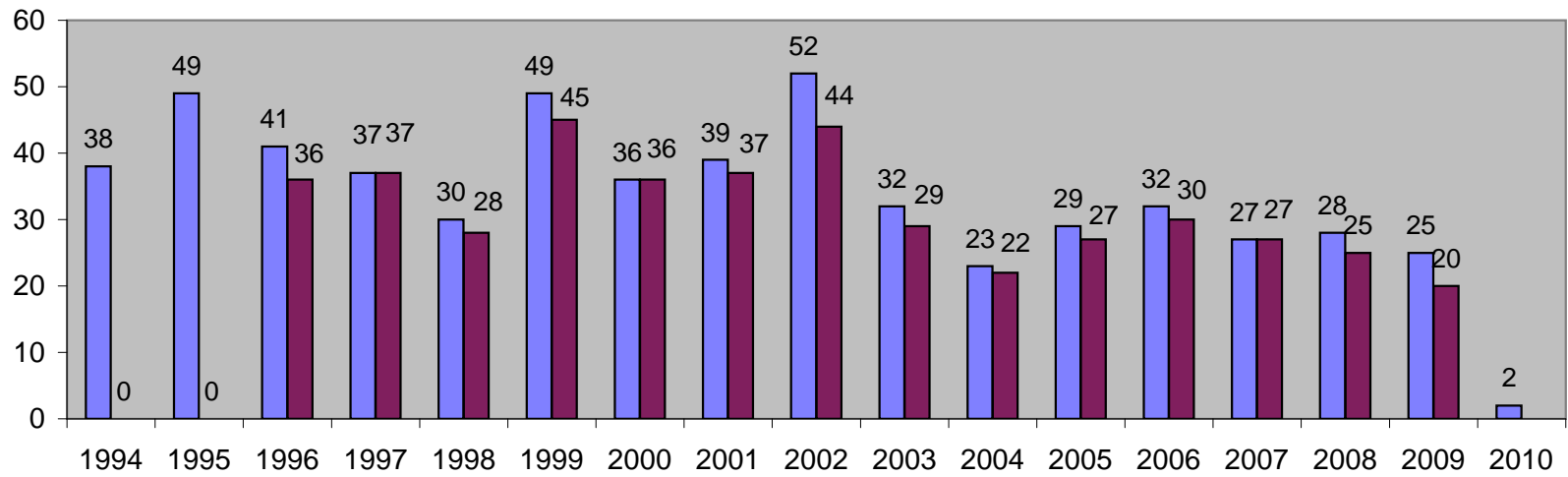
Casualties

Year	Fatal	Serious	KSI Total	Child KSI Total	Slight	Total
1994	38	383	421	61	2,385	2,806
1995	49	357	406	48	2,385	2,791
1996	41	365	406	64	2,663	3,069
1997	37	320	357	37	2,670	3,027
1998	30	371	401	56	2,701	3,102
Total 1994-98	39	359.2	398.2	53.2	2560.8	2959
1999	49	346	395	53	2,441	2,836
2000	36	320	356	48	2,548	2,928
2001	39	292	331	25	2,515	2,846
2002	52	237	289	25	2,252	2,541
2003	32	251	283	27	2,123	2,406
2004	23	228	251	35	2,090	2,341
2005	29	265	294	23	2,031	2,325
2006	32	240	272	31	2,043	2,315
2007	27	246	273	21	2,121	2,394
2008	28	242	270	27	2,048	2,318
2009	25	222	247	19	1,702	1,949
2010	2	38	40	7	15	55
Target 2010			239	27	2,305	

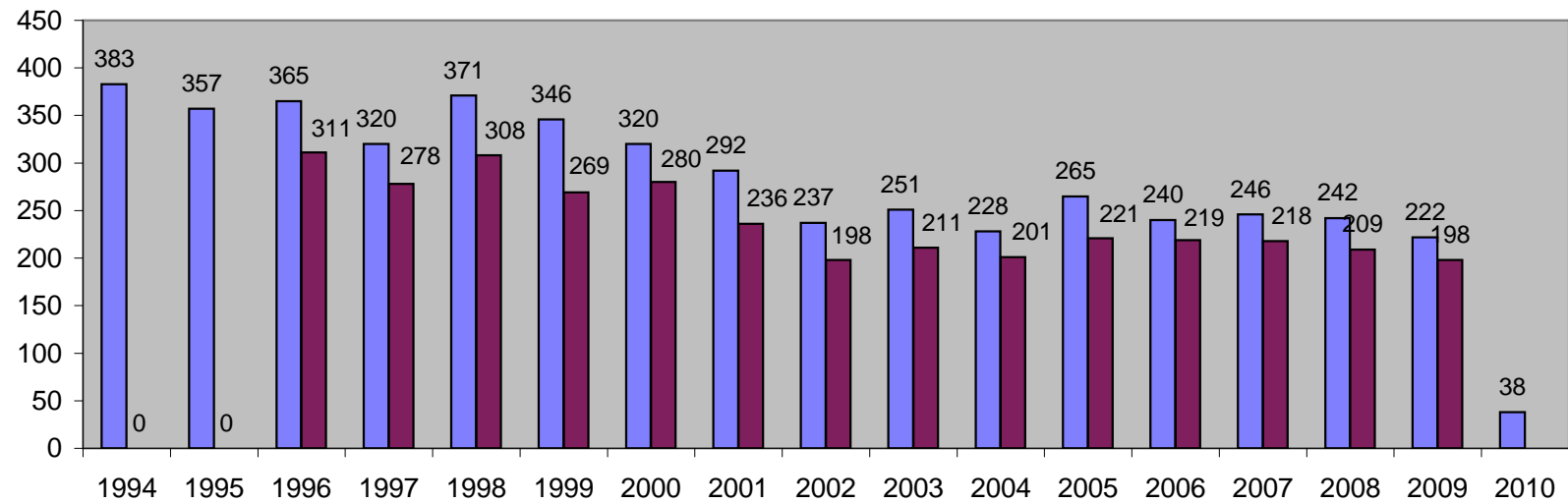
Collisions

Year	Fatal	Serious	KSI Total	Child KSI Total	Slight	Total
1994	0	0	0	0	0	0
1995	0	0	0	0	0	0
1996	36	311	347	59	1,886	2,233
1997	37	278	315	36	1,887	2,202
1998	28	308	336	52	1,831	2,167
1999	45	269	314	53	1,655	1,969
2000	36	280	316	44	1,737	2,053
2001	37	236	273	24	1,713	1,986
2002	44	198	242	25	1,590	1,832
2003	29	211	240	26	1,399	1,639
2004	22	201	223	35	1,436	1,659
2005	27	221	248	21	1,453	1,701
2006	30	219	249	31	1,432	1,681
2007	27	218	245	21	1,498	1,743
2008	25	209	234	24	1,448	1,682
2009	20	198	218	18	1,164	1,382
2010	2	33	35	7	0	35
Total	445	3,390	3,835	476	22,129	25,964

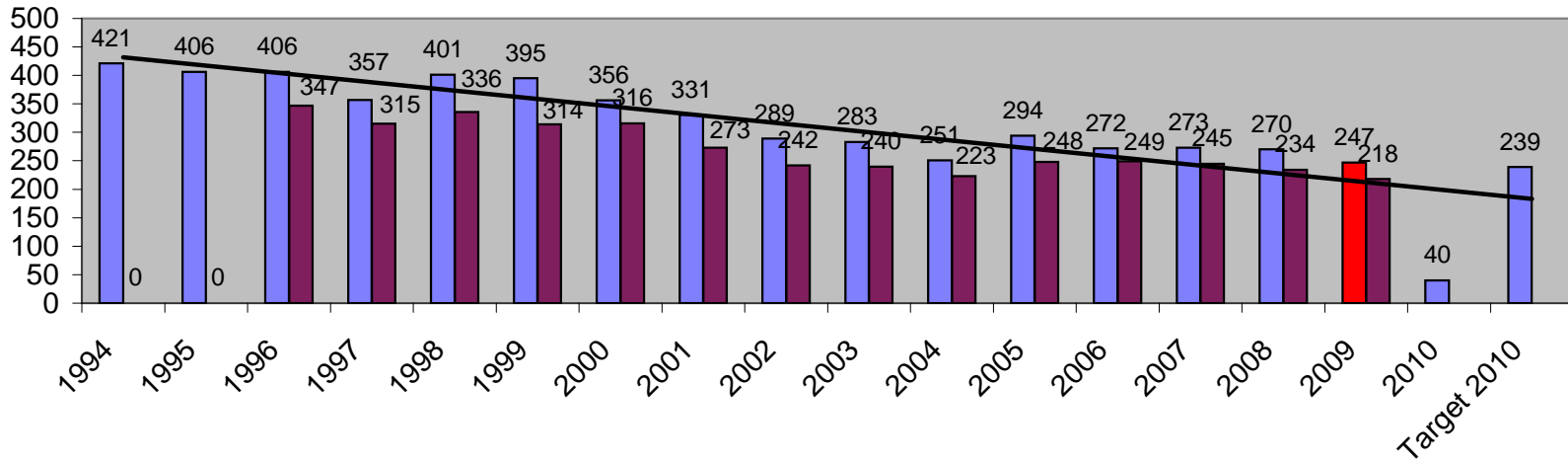
Fatal Casualties / Collisions



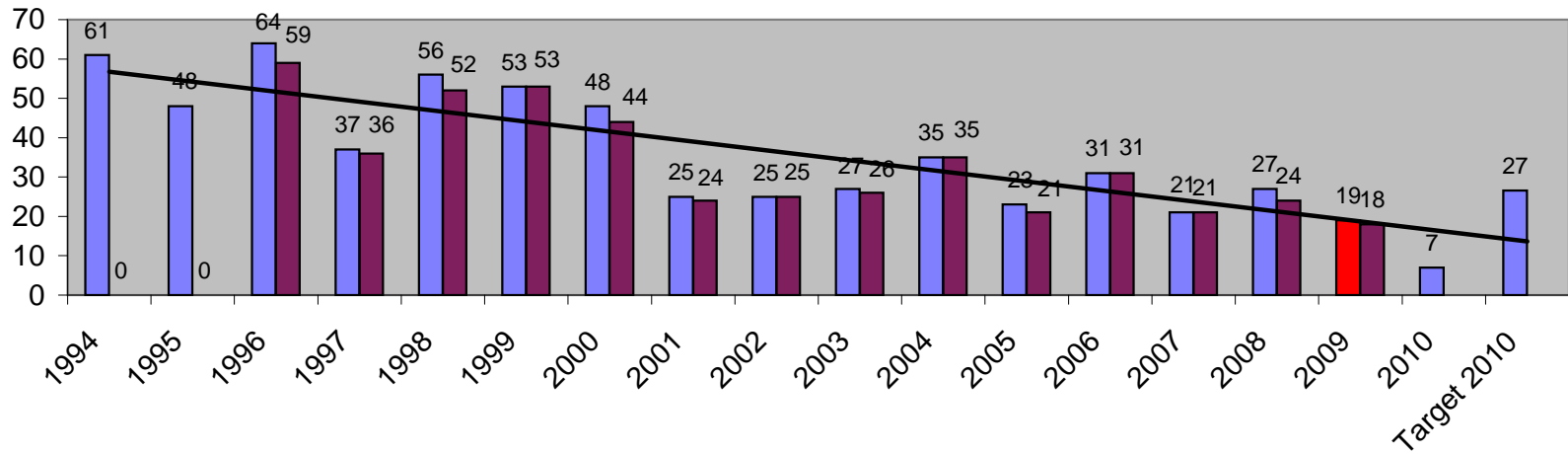
Serious Injury Casualties / Collisions

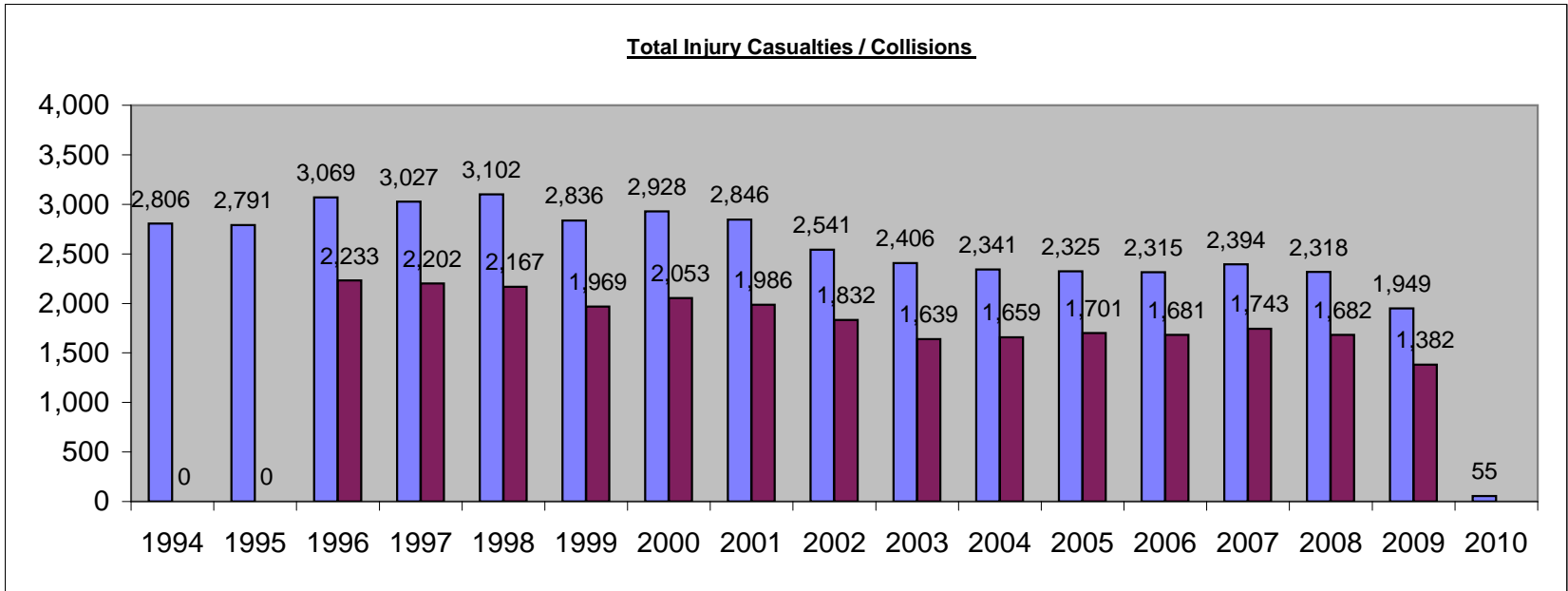
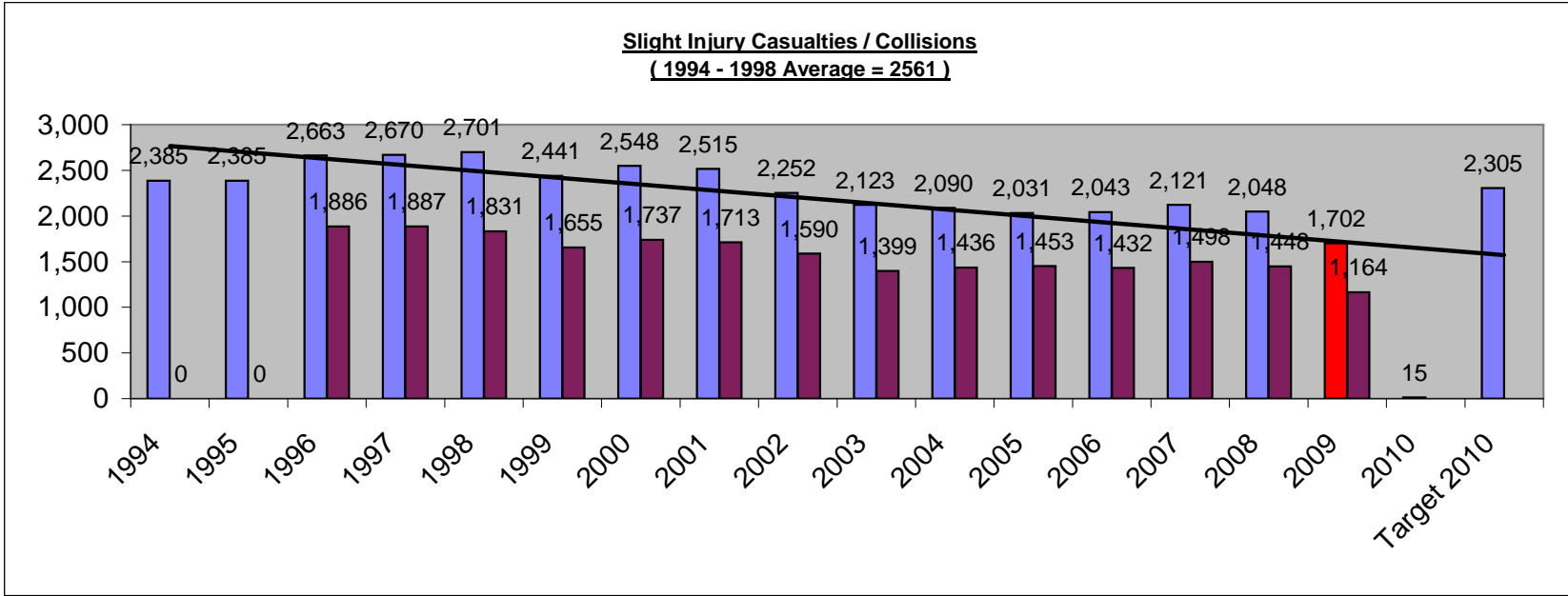


KSI Total Casualties / Collisions
(1994 - 1998 Average = 399)



Child KSI Total Casualties / Collisions
(1994 - 1998 Average = 55)





KSI'S IN BEDFORDSHIRE & LUTON

2009

247

**CENTRAL
BEDFORDSHIRE**

**BEDFORD
BOROUGH**

LUTON

135

60

52

2010

40

**CENTRAL
BEDFORDSHIRE**

**BEDFORD
BOROUGH**

LUTON

21

8

11

KSI'S IN BEDFORDSHIRE & LUTON

2008

270

**CENTRAL
BEDFORDSHIRE**

**BEDFORD
BOROUGH**

LUTON

125

80

65

2009

247

**CENTRAL
BEDFORDSHIRE**

**BEDFORD
BOROUGH**

LUTON

135

60

52

KSI'S IN BEDFORDSHIRE & LUTON

2007

273

**CENTRAL
BEDFORDSHIRE**

**BEDFORD
BOROUGH**

LUTON

135

83

55

2008

270

**CENTRAL
BEDFORDSHIRE**

**BEDFORD
BOROUGH**

LUTON

125

80

65